

## Recital Information

Our end of the year recital will be on **Tuesday, June 26th, 2012** at USF Theater 1.

*Dress Rehearsal: Monday, June 25th, 2012*

*Technical Rehearsals: Friday, June 22nd and*

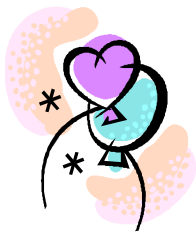
*Saturday, June 23rd 2012*

*Picture Day: Saturday June 16th, 2012*

*More information will be given to you very soon.*

*Please stay tuned!*

*Times are to be determined for all dates listed above!*



### Some important information on the recital!

Participating in the recital is not mandatory but a lot of fun!! If a student wishes to participate, class attendance is very important. The first half of the year focuses on learning proper technique and in January, preparations for the June Recital start. If a student misses too many classes, the instructor has the right to remove a student from the class or from the recital dance. Parents or students 18 years old or over will sign a recital participation sheet that will state that they understand and agree to the recital rules.

Students will need to stay the **ENTIRE** time for rehearsals and recital. No one is allowed to leave early, except students in the Pre-I levels because some of these students are as young as 3 years old and those with extreme situations who get permission before the actual recital (more info will be given to you in January). The door to the backstage area will not be opened unless a student has permission to leave. This is for the security of all the dancers and moms helping out backstage.

**Please note** that students will have to stay in the backstage area. We cannot let the students purchase a ticket and enter the auditorium.

**We will need volunteer moms and helpers** to watch the children and attend to groups. If you wish to participate, we will have more information when we come back from break. Please know that you will be required to attend all rehearsals and stay the entire show backstage. Please realize that rehearsal and the recital can be very lengthy and you must be willing to set aside a minimum of four hours for dress rehearsals and recital night. It's a lot of fun for the dancers backstage and we need moms to help with the kids with costume changes and to help the recital run smoothly. We appreciate your time!!!

**Once a student decides to participate in the recital**, Parents or students 18 years old or over will sign a recital participation sheet that will state that they understand and agree to the recital rules concerning attendance and rehearsals. The participation sheet is available at the front desk. One was also sent to you via email. You can print it and bring it back to the studio. Please fill out one per family!



If you have any further questions the studio is opened during the following hours:

Monday-Tuesday: 5pm-9pm

Wednesdays: 4pm-9pm

Thursdays: 4pm-9:30pm

Fridays: 5:30pm-8pm

Saturdays: 9am-2:15pm

Feel free to come by the studio during these hours, contact us by phone at 813-985-2555, or email us [firethorndance@verizon.net](mailto:firethorndance@verizon.net).





# FIRETHORN DANCE ACADEMY

10630 N. 56th Street Suite 208-211 ,Temple Terrace, Florida 33617

Phone: 813-985-2555 ,e-mail: [firethorndance@verizon.net](mailto:firethorndance@verizon.net)

## January/February Newsletter

*Hello Parents and Students! We would like to wish you  
and your families a Happy New Year!*

*Wishing you Joy, Love, Health, and Happiness!*

*Happy Valentine's Day!!!*



### **JUST A REMINDER:**

*Tuition is due the first class of the month. Any payments received after the 10th of the month will be considered late and your account will accrue a late charge of \$20.00. Please remember that we do not send invoices!*

### **Mark your Calendars!!!**

**Saturday, January 28th: Deadline to pay for  
recital costumes**



### **Payment Deadline for Recital Fee is Sat. March 24, 2012**

**(The Recital Fee is \$60.00 per dancer. It includes a performance t-shirt with the theme of the recital and each dancer's names listed on the back. It also includes a recital keepsake. The Recital Fee helps cover costs associated with the performance such as rental of the facilities, rental of lighting equipment, programs, etc...)**

**Tickets will go on sale at the beginning of April at the studio. The price per ticket is \$20.00.**

**Several families have already started making payments toward costumes or recital fee. You can add \$10.00/\$20.00 to your monthly tuition; therefore, it is easier when deadlines for payments are approaching. Don't hesitate to ask if you wish to start making payments toward recital costs.**



**The costume price book is out!!!** There are 3 binders that can be found in the lobby by the front desk area. You will find your child's class with a picture of the selected costume and the according price.

**Payment Deadline for costumes  
is Sat. January 28, 2012**

